

Math 344

Study:

HW + extras
 up to 3.1
 read 3.2
 try examples

Jan
 24
 13.2

HW + extras
 up to 3.2
 read 3.3
 etc.

Ch 12

Calc 1

→ change (deriv.)

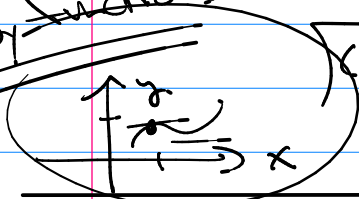
(anti-deriv.)

→ sums areas, vol., length
 definite integral

Final
 then

Calculus

Study functions



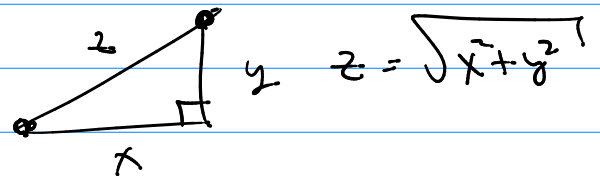
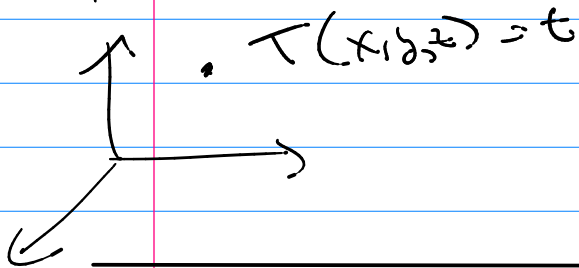
Calc 2

anti-deriv.

Calc 3

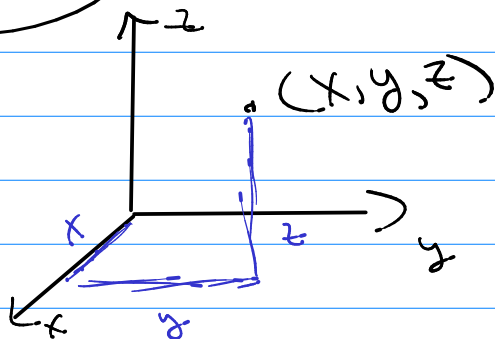
change? Sum?

(1D), (2D), (3D) → ?



Ch 12

3D cartesian coord.



① locations

② distance $d = \sqrt{(x_2 - x_1)^2 + (y_2 - y_1)^2}$

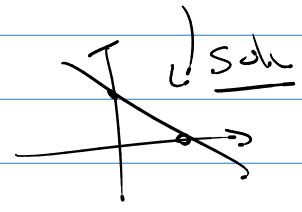
3D $d = \sqrt{(x_2 - x_1)^2 + (y_2 - y_1)^2 + (z_2 - z_1)^2}$

1D $d = \sqrt{(x_2 - x_1)^2} = |x_2 - x_1|$

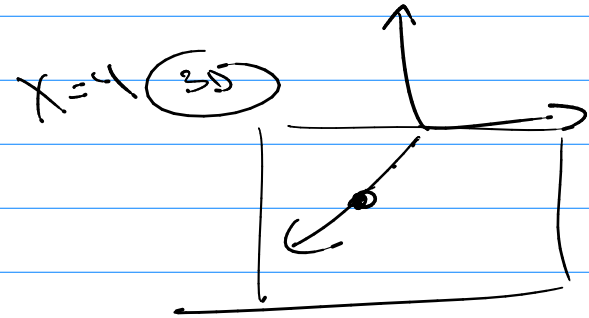
③ Solns to equations! 3D

- spheres
- surface

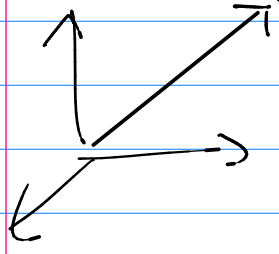
$x+y=3$



1D $x=4$



Vector



$\langle a_1, a_2, a_3 \rangle$

Scalar

3.7

today